



Product Catalog



Brand Profile

Smart Watch

- GTS7 Pro Smart Watch
- GTS7 Smart Watch
- CX3 Smart Watch
- CX2 Smart Watch
- GTR2 Smart Watch
- GTS8 Smart Watch
- GTR3 Smart Watch

Smart Band

- GTL2 Fitness Tracker
- S5 Fitness Tracker
- S90 Kids Smart Band

Watch Strap

Watch Face Gallery

OEM/ODM Customization





GTS7 Pro Smart Watch



- 2.0-inch HD screen, zinc-alloy mid-frame, dual-button design
- Smart assistant with real-time notifications, one-key Bluetooth calling
- All-around health insights for heart rate, blood oxygen, HRV stress, etc.
- Over 100 sports modes, supporting a variety of sports data recording

Display	2.0-inch	Resolution	320*386
Touch Screen	Full touch	Waterproof	IP68 water resistance
Case Material	Zinc alloy + PC	Bluetooth	Bluetooth 5.3
Battery	300mAh	Battery Life	5-7 days of use, 45 days of standby



Sports



Heart Rate



Sleep



SpO2



Stress



Activities



GTS7 Smart Watch



- 2.0-inch full-touch screen, screen-to-body ratio up to 85%
- Supports event reminders, Bluetooth calling, smart notifications, etc.
- Liveness recognition, high-precision heart rate and blood oxygen detection
- 100+ sports modes, personalized sports tracking and recording

Display	2.0-inch	Resolution	320*386
Touch Screen	Full touch	Waterproof	IP68 water resistance
Case Material	Zinc alloy + PC	Bluetooth	Bluetooth 5.3
Battery	300mAh	Battery Life	5-7 days of use, 45 days of standby



SpO2



Notifications



Sleep



Bluetooth Calls



Stress



Women's Health

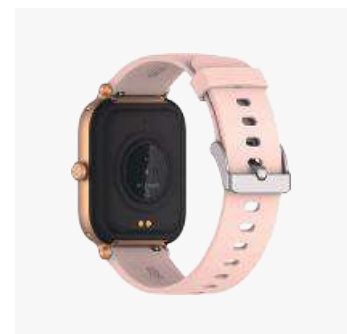


CX3 Smart Watch



- 1.95-inch HD full touch screen, multifunctional side button
- Real-time notifications, one-key Bluetooth calling and SOS calls
- Easy access to heart rate, blood oxygen, HRV stress, and sleep data
- 100+ sports modes, support real-time sports data recording

Display	1.95-inch	Resolution	240*282
Touch Screen	Full touch	Waterproof	IP68 water resistance
Case Material	Zinc alloy + PC	Bluetooth	Bluetooth 5.3
Battery	300mAh	Battery Life	5-7 days of use, 45 days of standby



Heart Rate



SpO2



Sleep



Stopwatch



Stress



Sports



CX2 Smart Watch



- Best value with a 1.95-inch HD screen & multifunctional side button
- Smart notifications, one-key emergency contact, Bluetooth calling
- 24/7 heart rate, blood oxygen, stress, and sleep monitoring
- 100+ sports modes, support real-time activities and sports tracking

Display	1.95-inch	Resolution	240*282
Touch Screen	Full touch	Waterproof	IP68 water resistance
Case Material	PC	Bluetooth	Bluetooth 5.3
Battery	300mAh	Battery Life	5-7 days of use, 45 days of standby



SpO2



Heart Rate



Sleep



Bluetooth Calls



Stress



Music Control



GTR2 Smart Watch



- 1.46-inch full HD large screen, 360*360 high resolution
- Digital crown + custom shortcut button, enhanced user experience
- Smart assistant on the wrist, push notifications, one-key Bluetooth calling
- High-precision bio-sensors, keep track of health data and over 100 sports

Display	1.46-inch	Resolution	360*360
Touch Screen	Full touch	Waterproof	IP68 water resistance
Case Material	Zinc alloy + PC	Bluetooth	Bluetooth 5.3
Battery	300mAh	Battery Life	5-7 days of use, 45 days of standby



Sports



Heart Rate



Sleep



SpO2



Stress



Notifications



GTS8 Smart Watch(AMOLED)

Coming soon

- Flagship smart watch, 2.04-inch AMOLED screen, metal frame, dual-button layout
- Smart life assistant, optional NFC functions
- Supports heart rate, blood oxygen, HRV stress, sleep monitoring with upgraded algorithms for higher accuracy
- Over 100 sports modes, track steps/calories/distance in real time, 3ATM waterproof



Heart Rate



Stress



SpO2



Sports



Sleep



Women's Health



Activities



Respiratory Rate





GTR3 Smart Watch (AMOLED) ○ ● ● ●

Coming soon

- Flagship smart watch, 1.43-inch AMOLED screen, metal frame, exclusive custom strap
- Smart life assistant, optional NFC functions
- Supports heart rate, blood oxygen, HRV stress, sleep monitoring with upgraded algorithms for higher accuracy
- Over 100 sports modes, track steps/calories/distance in real time, 3ATM waterproof



Heart Rate



Stress



SpO2



Sports



Sleep



Women's Health



Activities



Respiratory Rate



GTL2 Fitness Tracker



- Smart fitness tracker, 1.47-inch HD full-touch screen
- Smart notifications, women's health, Pomodoro timer, etc.
- Keep track of health data such as heart rate, blood oxygen, stress, etc.
- Track over 100 sports modes, record steps/calories/distance in real time

Display	1.47-inch	Resolution	172*320
Touch Screen	Full touch	Waterproof	IP68 water resistance
Case Material	PC+ABS	Bluetooth	Bluetooth 5.3
Battery	200mAh	Battery Life	5-10 days of use, 45 days of standby



Sports



Breathe



Sleep



SpO2



Stress



Weather



S5 Fitness Tracker



- Classic fitness tracker, supports 16 sports modes
- Keep track of heart rate, blood oxygen, temperature, and more indicators
- Lightweight wearing experience, does not interfere with any sports activity
- Hundreds of watch faces, express individuality

Display	0.96-inch	Resolution	80*160
Touch Screen	Single touch	Waterproof	IP68 water resistance
Case Material	PC+ABS	Bluetooth	Bluetooth 5.3
Battery	145mAh	Battery Life	5-7 days of use, 45 days of standby



Sports



Heart Rate



Sleep



SpO2



Stress



Notifications



S90 Kids Smart Band



- Kids' smart band, designed specifically for children
- 4 fun strap colors, skin-friendly material
- 16 sports modes, real-time heart rate and blood oxygen monitoring
- Compact and lightweight, with multiple cute watch faces

Display	0.96-inch	Resolution	80*160
Touch Screen	Single touch	Waterproof	IP68 water resistance
Case Material	PC	Bluetooth	Bluetooth 5.0
Battery	85mAh	Battery Life	5-8 days of use, 35 days of standby



Notifications



SpO2



Sleep



Heart Rate



Sports



Activities





Various Strap Options Available

In the selection of watch strap materials, we not only focus on health, comfort, and environmental protection, but also strive for excellence in moisture-proof and skin-sensitive materials. Our rigorous testing and multiple international certifications ensure comfort for everyone, from adults to children.

We offer various strap materials and more than 10 strap colors, perfectly suited for various activities and everyday outfits.

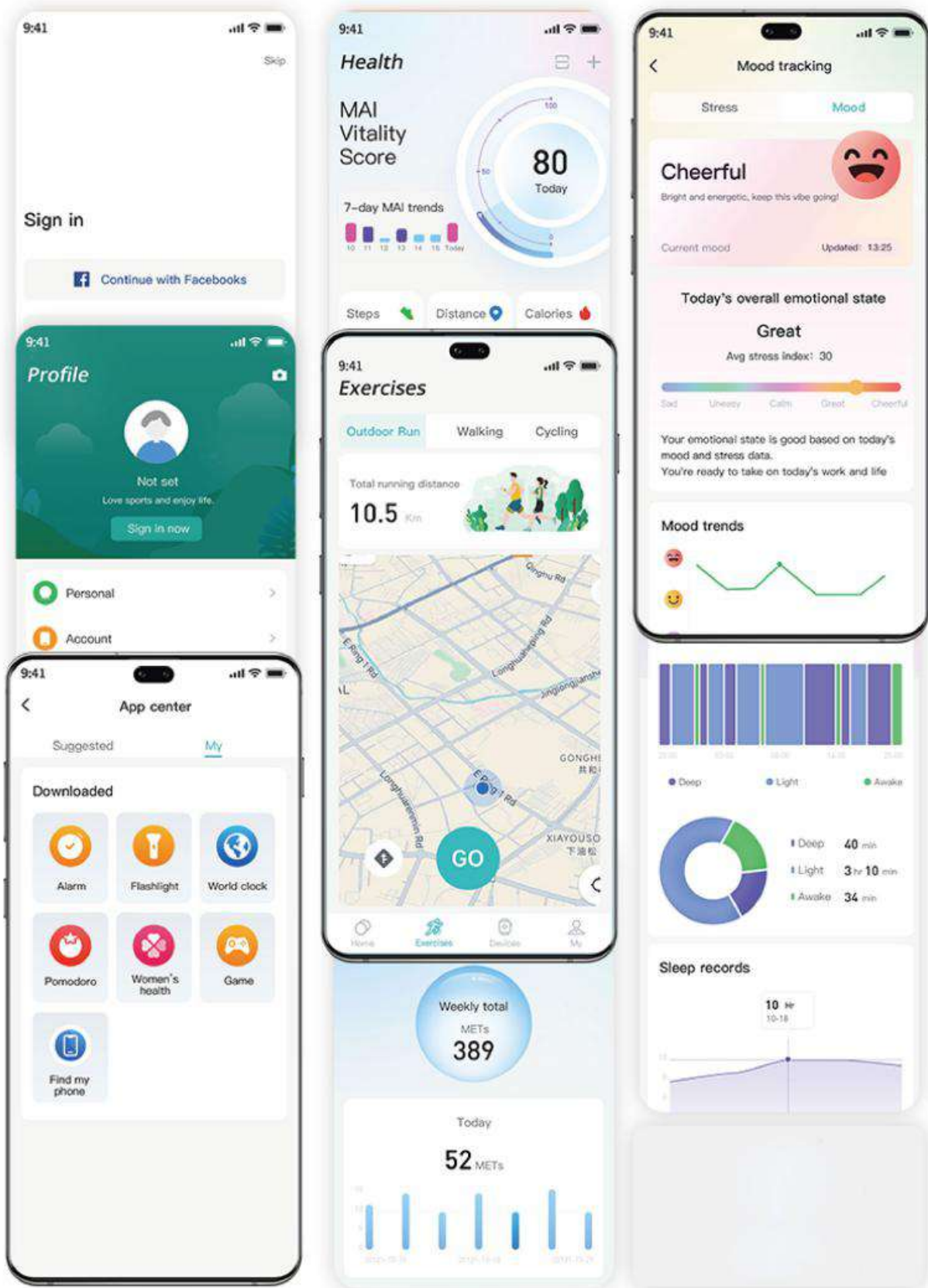
Watch Face Gallery

Watch Your Style Express Your Vibe

Explore Runmefit's extensive gallery of original watch faces, with hundreds of watch faces ready for you to choose from. More innovative and unique designs are coming soon, so stay tuned for the latest updates!

* Some watch faces are exclusive to specific models. Custom services require a minimum order quantity. Contact the Runmefit sales team for more details.





Download App

Explore more possibilities

Enhance your smartwatch experience with the app, the best match for your device. Download and connect to unlock a wide range of new features, a rich app center, and embark on a smarter health journey. Seamlessly link your life with Runmeift for a healthier, enriched lifestyle.

- Seamlessly pair with all devices
- Connect and sync, just in one single click
- Fitness and wellness insights, clear at a glance
- Cloud database, secure data backup
- Vast watch faces, perfectly match any occasion
- Explore more advanced features



OEM and ODM Customization

Professional services for e-commerce sellers

We offer specialized, end-to-end support for international sellers. From light OEM branding tailored for e-commerce to efficient packaging designs that reduce FBA fulfillment fees, we make your needs a priority, even during peak seasons like Prime Day and Black Friday. We also provide a multilingual help center to help reduce negative reviews. Whether you're starting out or scaling up your e-commerce business, we can provide you with a tailor-made solution.

• Custom Logo

We provide bespoke logo customization for companies, institutions, brands, clubs, and event organizers, including logos on strap buckles/back shells, boot screens, and packaging, with fast sample delivery.



• Custom Packaging and Manual

We offer personalized/branded packaging, multi-language manuals, and premium gift box customization services. From packaging design to sample shipment, it can be completed in just a few days.

• Custom Boot Screen

Based on your brand features and product positioning, we can provide boot screen customization services, including startup logo display and interface design, making your products more personalized and professional. (Minimum order quantity required)



• Multilingual/UI Customization

Our customization services extend to custom watch faces, UI/UX designs, and language options, helping your brand adapt to different countries and regional market demands. (Minimum order quantities apply.)



• Function Customization

We recognize that each brand has unique functional requirements. Beyond basic features, we offer custom services to suit local regulations and customer preferences, allowing for modular software adaptation. (Minimum order quantities apply.)

• Full-case ODM Customization

From concept to manufacturing, our one-stop ODM service covers exclusive mold creation and in-depth software customization. We strictly manage the entire project to match your brand essence and quality standards. (Contact the Runmefit sales team for more details.)



• E-commerce Brand Customization

Elevate your brand with our comprehensive image design services, including logo, brand identity, and visual identity (VI) design, to boost your brand value and market competitiveness. (Contact the Runmefit sales team for more details)